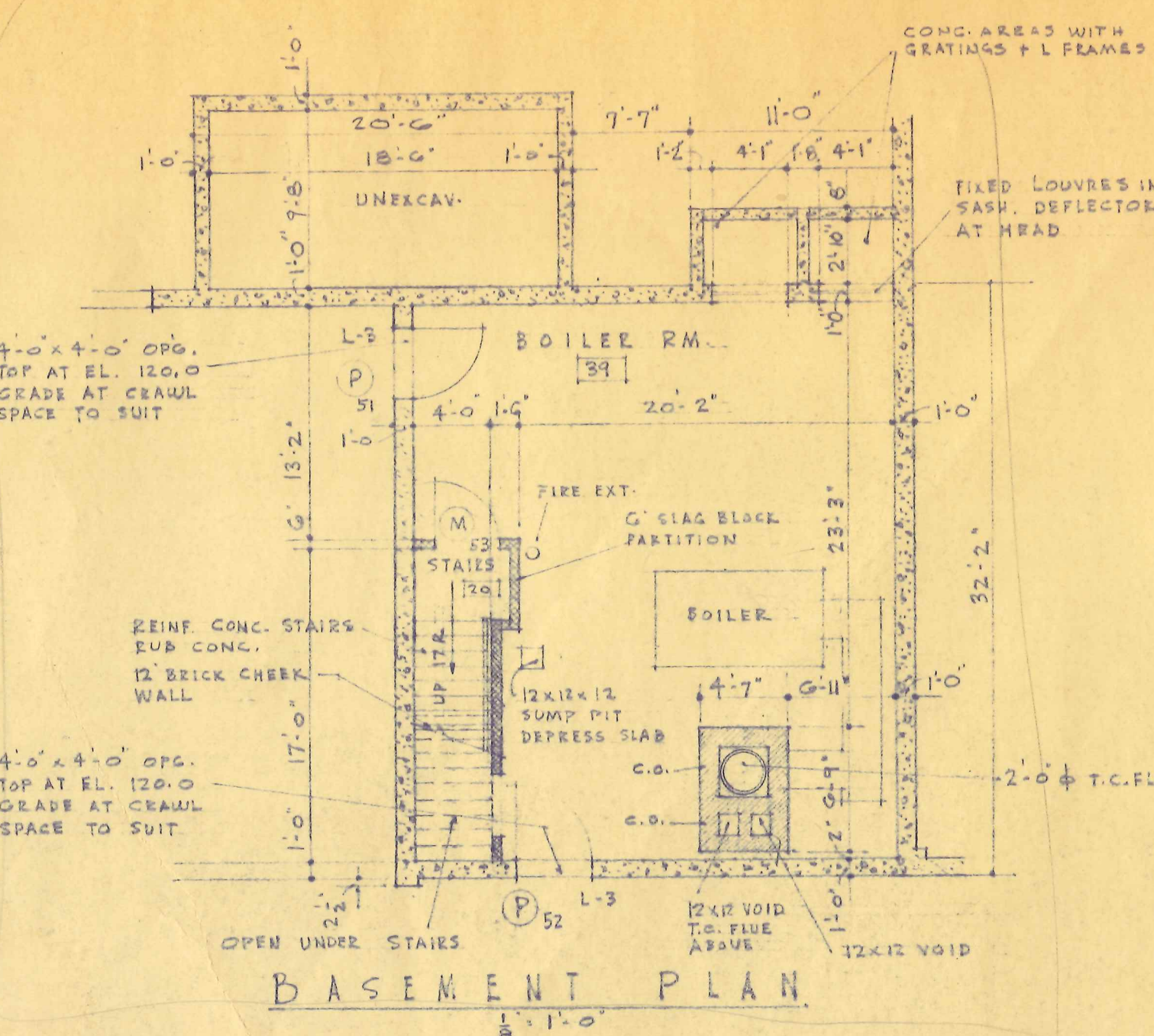


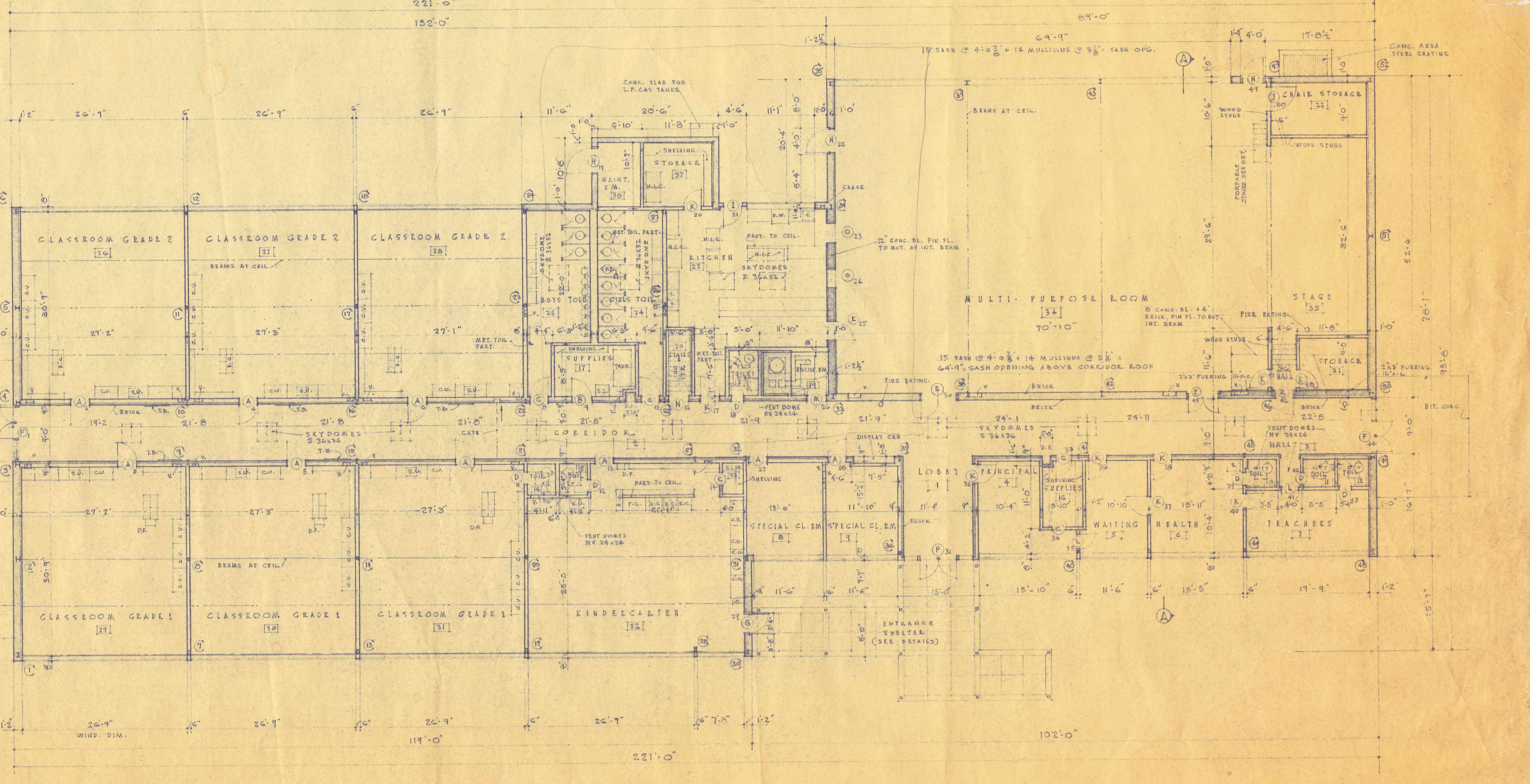
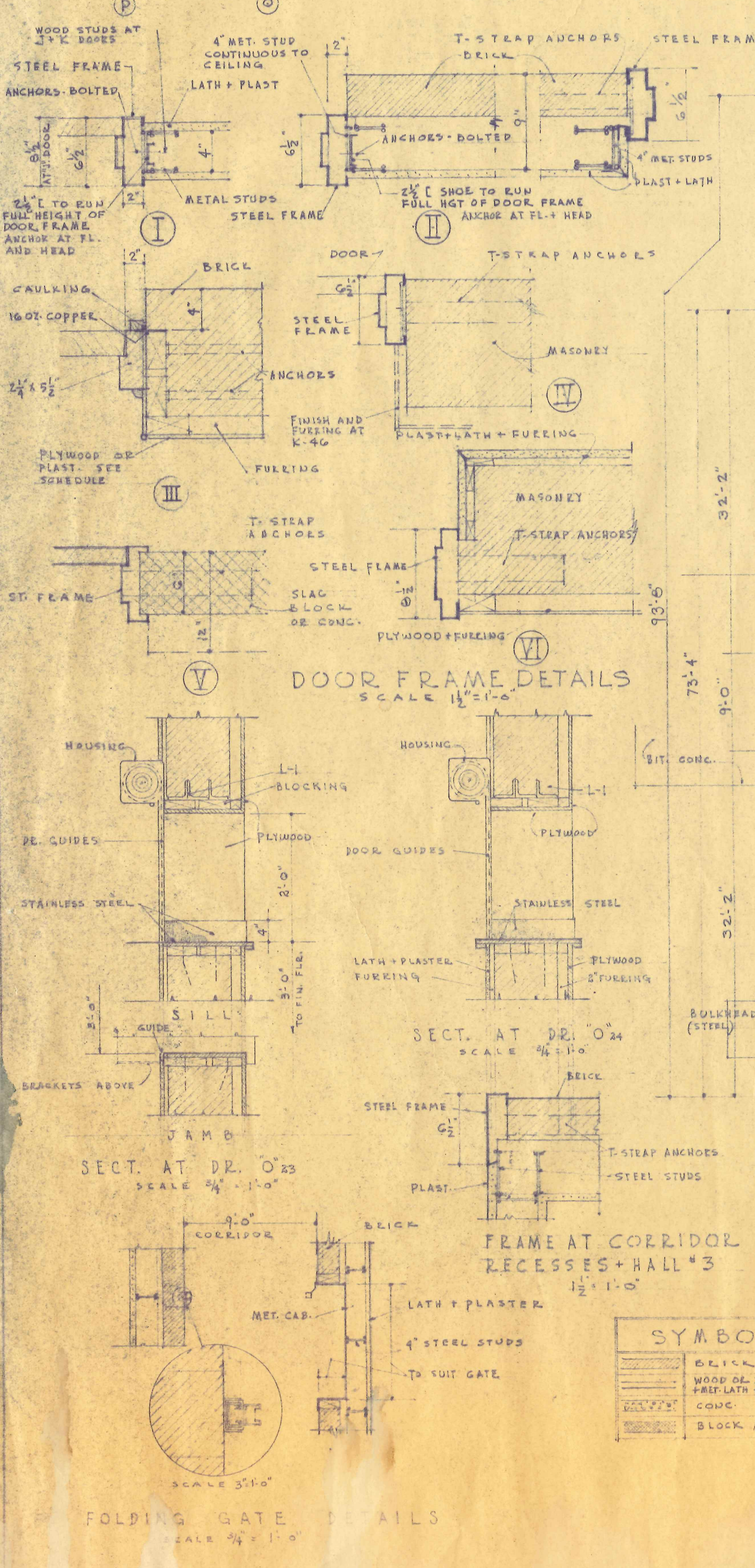
DOOR SCHEDULE									
MARK	WIDE	HIGH	THICK	MAT. MIN. CORE	GLASS POL. WIRE CL.	SEALING MAT.	TYPE	SADDLE	REMARKS
A	3'-0"	7'-0"	1 3/4"	MIR. CORE		METAL	II		METAL LOUVERS
B	3'-4"	6'-10 1/2"	1 3/4"	MIR. CORE		METAL	II		
C	2'-6"	6'-10 1/2"	1 3/4"	MIR. CORE		METAL	I, II	SLATE	SLATE SADDLES AT 8'-4 1/2"
D	2'-0"	6'-10 1/2"	1 3/4"	MIR. CORE		METAL	I, II		METAL LOUVER
E	2'-2'-0"	6'-10 1/2"	1 3/4"	MIR. CORE		METAL	IV		
F	2'-2'-7"	7'-0 1/2"	2 1/4"	WOOD	PLATE GL.	WOOD	SEE DET.	BRONZE	REMOVABLE MULLIONS
G	3'-0"	7'-0 1/2"	2 1/4"	WOOD	PLATE GL.	WOOD	III		
H	3'-0"	7'-0 1/2"	2 1/4"	MIR. CORE		WOOD	III		BRONZE
I	3'-0"	7'-0 1/2"	2 1/4"	MIR. CORE		WOOD	SEE DET.		BRONZE
J	4'-0"	6'-10 1/2"	1 3/4"	MIR. CORE		METAL	I		
K	3'-0"	6'-10 1/2"	1 3/4"	MIR. CORE		METAL	I, II, VI		
L	2'-0"	6'-10 1/2"	1 3/4"	MIR. CORE		METAL	I		B LABEL DOOR + FRAME
M	3'-0"	6'-10 1/2"	1 3/4"	MIR. CORE		METAL	II, V		
N	5'-0"	6'-10 1/2"	1 3/4"	MIR. CORE		METAL	II		
O	2'-0"	2'-0"	1 3/4"	GALV. STEEL		SEE DET.			ROLL UP STEEL SHUTTER DOOR
P	3'-0"	3'-10"	1 3/4"	FLUSH KAL.		METAL	V		B LABEL DOOR + FRAME

NOTE:
 1. NO. 10 DOOR OMITTED.
 2. 2'-0" x 6'-4" x 1 3/4" DOORS AT TEACHERS + STORAGE CLOSET IN EACH CLASSROOM.



ROOM FINISH SCHEDULE									
ROOM NO.	DESIGNATION	FLOOR	BASE	WALL	CEILING	MATERIAL	TYPE	WAINSCOT	REMARKS
1, 2	LOBBY CORRIDOR	ASPH. TILE		BRICK	PLASTERED	ALUM.	ATTACHED		PLASTER WALLS + CEIL. AT RECESSES FOR CHAIRING POSTS - CEIL. 8'-0"
4, 5, 6, 7	PRINC. EM. WAITING HEALTH TEACHERS SPECIAL CL. RMS.	ASPH. TILE	RUBBER	PLAST.	ACCOUST. TILE	FURRED			
8, 9	SUPPLY RMS.	ASPH. TILE	RUBBER	PLAST.	ACCOUST. TILE	FURRED			WOOD SHELVING - SEE DETAILS
10, 11, 12, 13, 14	TOILETS	ASPH. TILE	RUBBER	PLAST.	PLAST.	FURRED			3'-0" CEILING HT. (CORNER) + MET. LATH + PLASTER
15	HALL	ASPH. TILE	RUBBER	PLAST.	ACCOUST. TILE	SUST.			3'-0" CEILING HT.
19	ENGINEER ROOM	CONC.		EDGE BLOCK PLAST.	PLAST.	FURRED			VERMICULITE PLAST. ON WALLS + CEILING
20	STAIRS	CONC.		EDGE BLOCK PLAST.	PLAST.	FURRED			PLASTER WALLS ABOVE FIRST FLOOR. CONC. + SLAG BLOCK WALLS BELOW 1ST FL.
21, 22	STORAGE RMS.	ASPH. TILE	RUBBER	PLAST.	PLAST.	FURRED			SEE DETAILS OF CEILING CONSTRUCTION
23	KITCHEN	CREAM TILES	RUBBER	PLAST.	PLAST.	FURRED			
24, 25	TOILETS	CONC.		EDGE BLOCK PLAST.	PLAST.	FURRED			WAIN. 6'-0" HIGH
26, 27, 28, 29, 30, 31	CLASSROOMS	CONC.		EDGE BLOCK PLAST.	PLAST.	FURRED			
32, 33	KINDERGARTEN CLOSET	ASPH. TILE	RUBBER	PLAST.	ACCOUST. TILE	EXPOSED			PLASTER CEILING (FURRED) IN CLOSET
34	MULTI-PURPOSE ROOM	ASPH. TILE	RUBBER	PLAST.	ACCOUST. TILE	EXPOSED			SEE DETAILS
37	STORAGE RM.	CONC.		EDGE BLOCK PLAST.	PLAST.	FURRED			SEE DETAILS - SHELVING
38	MAINTENANCE RM.	CONC.		EDGE BLOCK PLAST.	PLAST.	FURRED			
39	BOILER RM.	CONC.		EDGE BLOCK PLAST.	PLAST.	FURRED			
35	STAGE	WOOD	RUBBER	ONE PLYWOOD	ACCOUST. TILE	FURRED			
36	HALL	ASPH. TILE	RUBBER	ONE PLYWOOD	ACCOUST. TILE	FURRED			

NOTE: ROOM NO. 18 OMITTED



FIRST FLOOR PLAN
 SCALE 1/8" = 1'-0"

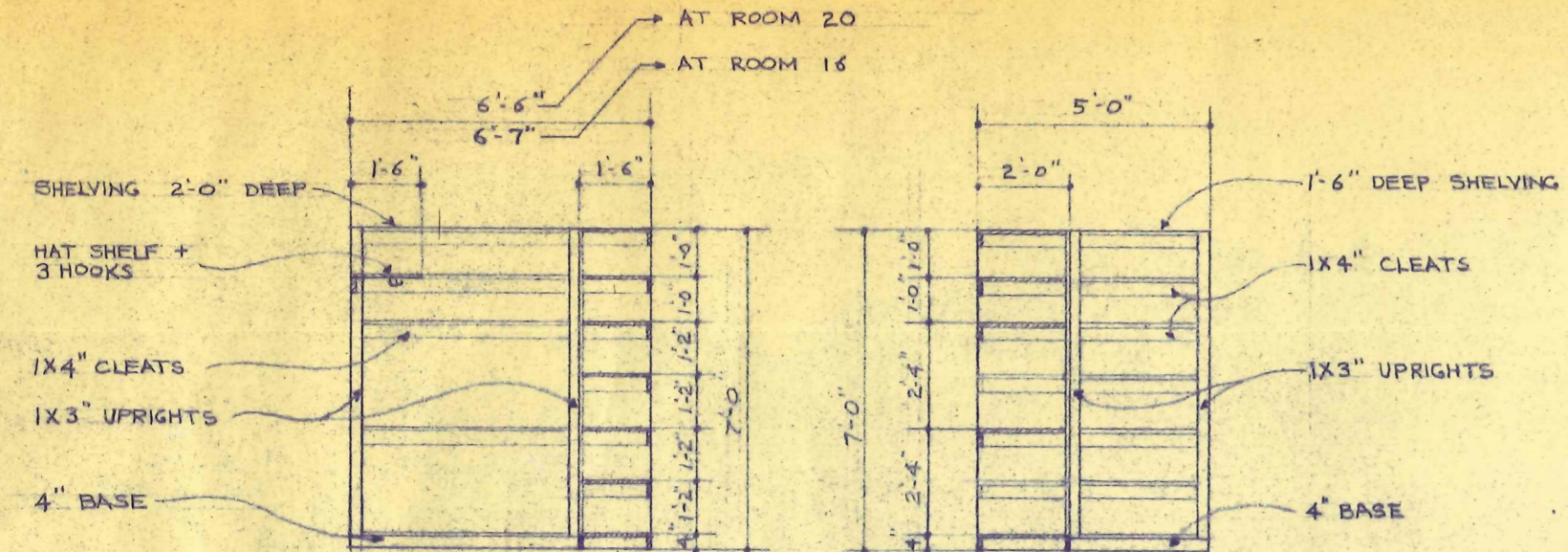
SYMBOLS	
[Symbol]	BRICK
[Symbol]	WOOD OR STEEL STUDS PART. LATH + PLAST.
[Symbol]	CONC.
[Symbol]	BLOCK MASONRY

ABBREVIATIONS	
B.C.	BOOKCASE
C.D.	CUBICLE UNIT
D.F.	DRINKING FOUNTAIN
D.W.	DISH WASHB.
K.C.	KINDERGARTEN CARTS
P.C.	PAPER CABINET
S.	SINK
N.C.	NOT IN CONTRACT
S.S.	SLOP DRAIN
T.S.	TICKET UNIT
V.	VENT

NOTES:
 CONTRACTOR TO VERIFY ALL DIMENSIONS AND CONDITIONS AT BUILDING.
 ALL STUD PARTITIONS TO BE 4" THICK UNLESS OTHERWISE NOTED. PARTITION THICKNESS TO BE INCREASED AS REQUIRED FOR VENT STACKS.
 SEE DETAILS FOR LOCATION OF CLASSROOM DOORS.
 ALL CEILING NOTED AS FURRED OR SUSP. TO BE CONSTRUCTED ON 2'-4" x 16" C. (SUSPENDED ON TEARING) 1" x 3" FURRING 2'-0" x 6" AND CEILING FINISH EXCEPT R.V. 10, 11, 12, 13, 14, 15 ALL EXTERIOR WALLS TO HAVE 1" x 3" FURRING 10" x 6" EXCEPT ROOMS 34 AND 35 WHICH SHALL HAVE 2" x 3" 10" C.

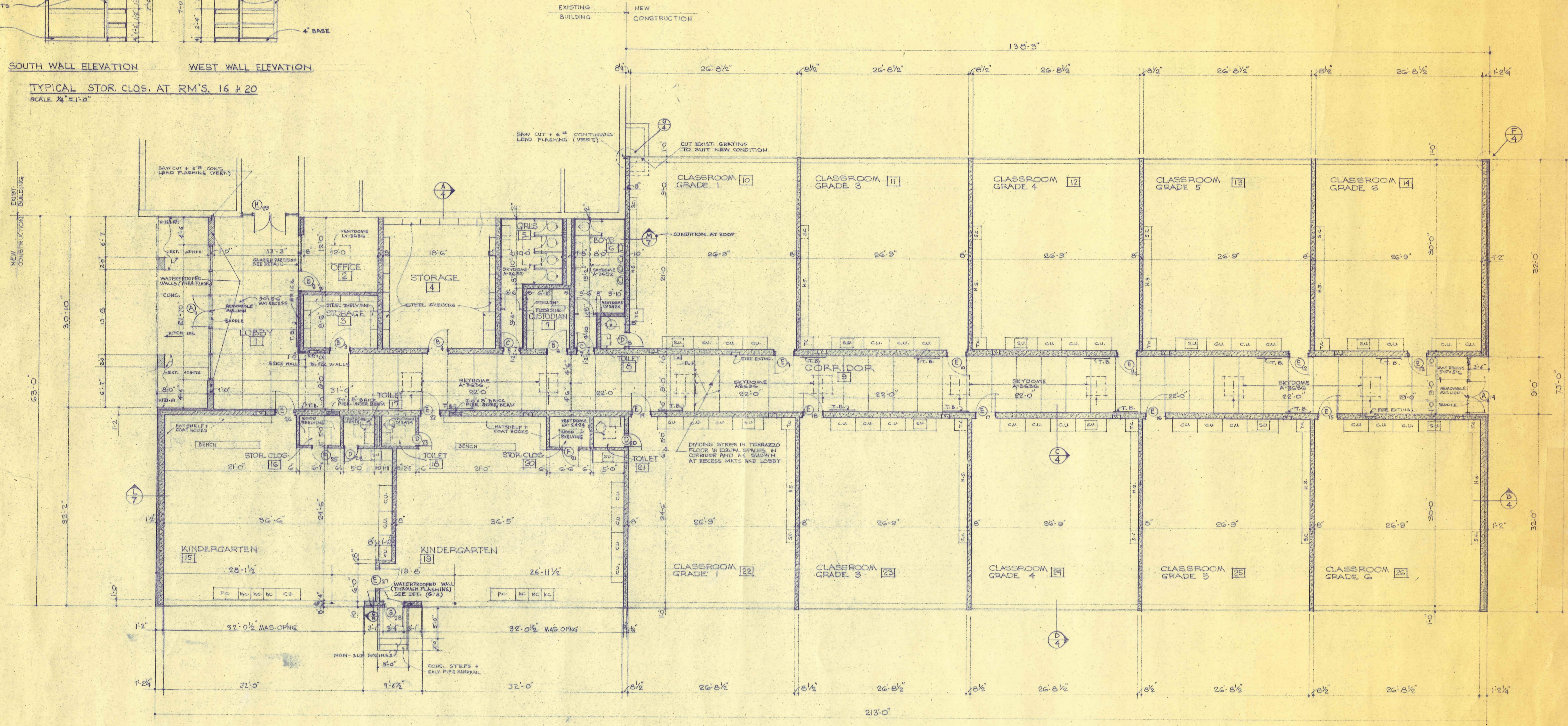
FIRST FLOOR PLAN

NO. 2	PLEASANT VALLEY SCHOOL	DWG. NO. 2
DATE: 12-15-55	GROTON - CONN.	SCALE: AS SHOWN
DESIGNED BY: LEX. ASH	SCHOLFIELD & LINDSAY ARCHITECTS	DATE: 12-15-55
	NEW LONDON, CONN.	

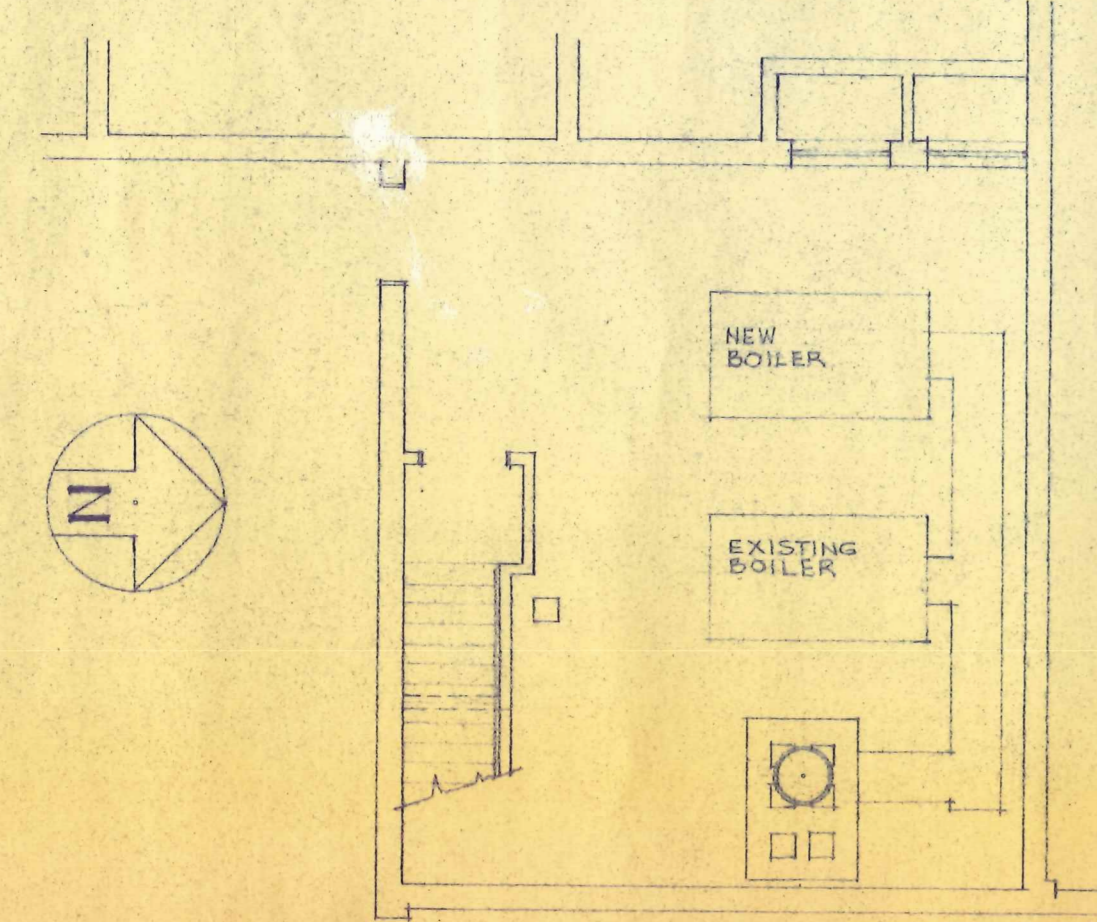
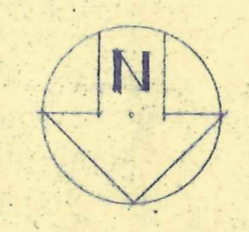


SOUTH WALL ELEVATION WEST WALL ELEVATION

TYPICAL STOR. CLOS. AT RM'S. 16 & 20
SCALE 1/4" = 1'-0"



FIRST FLOOR PLAN
SCALE 1/8" = 1'-0" FINISH FLOOR ELEV. 122.0'



PLAN AT EXISTING BOILER ROOM
SCALE 1/8" = 1'-0"

ABBREVIATIONS	
S.S.	SLOP SINK (FLOOR TYPE)
S.U.	SINK + STORAGE UNIT
C.U.	CUBICLE UNIT
P.C.	PAPER CABINET
K.C.	KINDERGARTEN CART
H.S.	HAT SHELF
T.C.	TEACHERS CLOS.
S.C.	SUPPLY CLOS.
V.	VENT
D.F.	DRINKING FOUNTAIN
F.E.	FILE EXTINGUISHER

SYMBOLS	
	MASONRY BLOCK
	BRICK
	CONCRETE

ADDITION TO THE PLEASANT VALLEY SCHOOL FOR TOWN OF GROTON, CONN.
SCHOLFIELD, LINDSAY & LIEBIG ARCHITECTS
WATERFORD, CONNECTICUT